

**Key**

- Air Sensitive Receiver
  - Maximum Daily TSP Concentration ( $\mu\text{g}\text{m}^{-3}$ )
  - Liantang BCP Source (Reduced Area)
  - Shenzhen River Emission Sources
  - Liantang BCP Source
  - Work Area I
  - Work Area II
  - Work Area III
- Note: Daily TSP Criterion:  $260\mu\text{g}\text{m}^{-3}$   
Exceedance predicted at A11

**Air Sensitive Receiver**

A11	Tsong Yuen Ha
-----	---------------

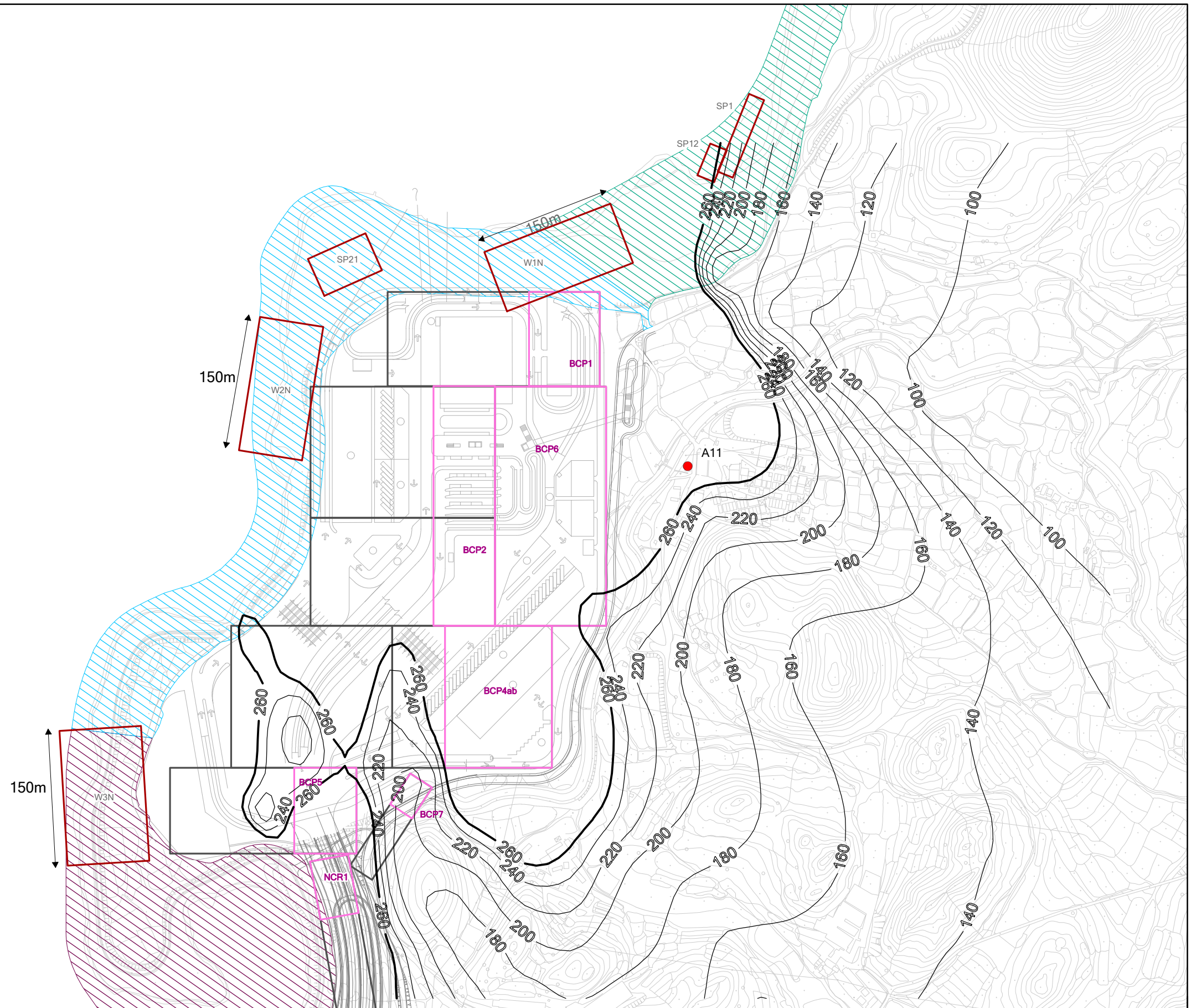


Figure 4.6

Unmitigated Maximum Daily TSP Concentration at 1.5m above ground  
(Scenario 2 - Active Works Areas Shift to North)